

SERIES D 215 | DUAL STAGE HP REGULATOR

- Diaphragm dual stage
- Purity up to 6.0
- Inlet pressure:
200 (2900 psi)
or 300 bar (4350 psi)
- Outlet pressure:
1/3/8/16 bar
14.5/44/116/232 psi

- ★ Compact and light-weight design
- ★ 1 inlet / 1 outlet
- ★ O₂ application compatible
- ★ Inlet/outlet pressure gauges
- ★ 1 safety relief valve

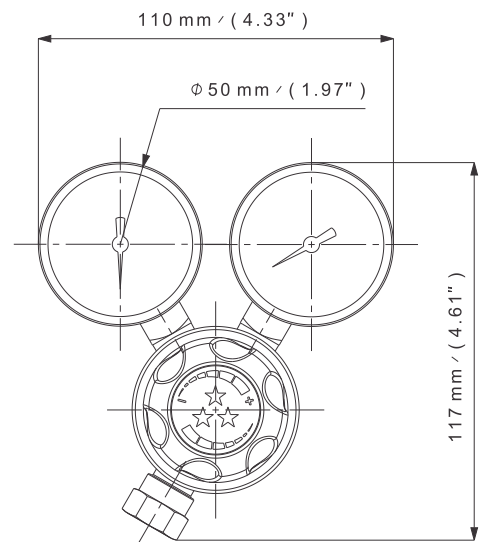
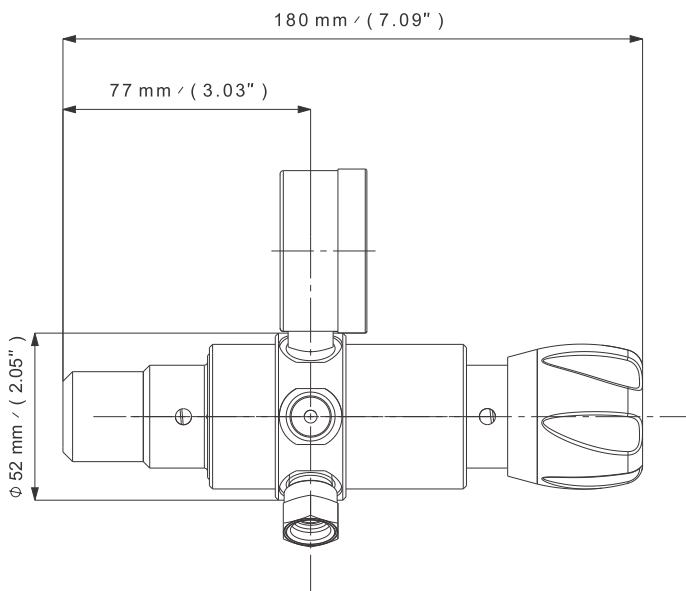
Special requirements on request

APPLICATIONS

- Designed for cylinder regulator applications.
- Ideally suited for pure, inert and mildly corrosive gas applications requiring a very stable outlet pressure.

KEY FEATURES

- The D 215 regulator is based on the high-performing S 215 technology but delivers superior outlet pressure stability.
- Accurate pressure control for reliable service and guarantees a stable outlet pressure.
- Compact, ergonomic and lightweight.





EQUIPMENT



DL/DI 230

Piston and bellows type two stage regulator for very precise pressure control. For pure, inert or mildly corrosive gases. Chrome plated brass (DL) and stainless steel (DI) version available.

Entry pressure (bar/psi)	200/2900		
Max. outlet pressure (bar)	1	3	10
Max. outlet pressure (psi)	14,5	44	145
Nominal Flow (Nm ³ /h N ₂)	2	2,5	3,5



DL 230-0.1

Piston and diaphragm type two-stage regulator for very precise pressure control of low pressure applications. Chrome plated brass.

Entry Pressure (bar/psi)	200/2900
Max. outlet pressure (bar)	0,1
Max. outlet pressure (psi)	1,4
Nominal Flow (Nm ³ /h N ₂)	0,5



DL 215

Diaphragm type two-stage regulator for sensitive pressure control. For pure, inert or mildly corrosive gases. Chrome plated brass (DL) and stainless steel (DI) version available.

Entry pressure (bar/psi)	300/4350			
Max. outlet pressure (bar)	1	3	8	16
Max. outlet pressure (psi)	14,5	44	116	232
Nominal Flow (Nm ³ /h N ₂)	0,4	1,2	2,9	10



SL 15

Diaphragm single stage regulator for high flow with low pressure applications. Chrome plated brass (SL) and stainless steel (SI) version available.

Entry pressure (bar/psi)	25/360
Max. outlet pressure (bar)	8
Max. outlet pressure (psi)	116
Nominal Flow (Nm ³ /h N ₂)	50



Point of Use Mono SL 15

Monoblock unit designed for all pure and ultra-pure gases applications in laboratories cabinets or panel mounting. Diaphragm single stage regulator adapted for high flow applications.

Entry pressure (bar/psi)	25/360
Max. outlet pressure (bar)	8
Max. outlet pressure (psi)	116
Nominal Flow (Nm ³ /h N ₂)	50



TDL/TDI 200/500

This switchover boards are ideally suited to insure gas supply from many high-pressure sources of high purity either non-corrosive (TDL) or corrosive gases (TDI).

The 200 version is adapted for low flow applications and the 500 version for high flow one

	Version 200	Version 500		
Entry pressure (bar/psi)		300/4350		
Max. outlet pressure (bar)	10	15	25	50
Max. outlet pressure (psi)	145	230	375	750
Nominal Flow (Nm ³ /h N ₂)	10			

